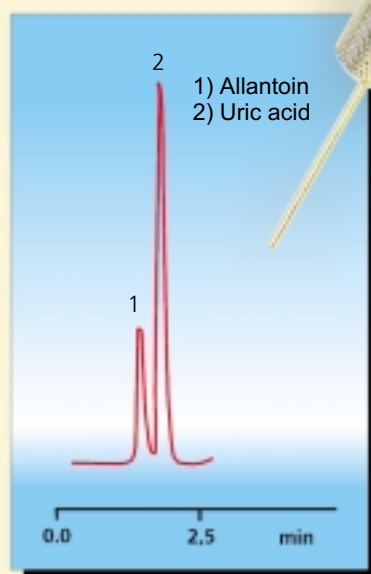
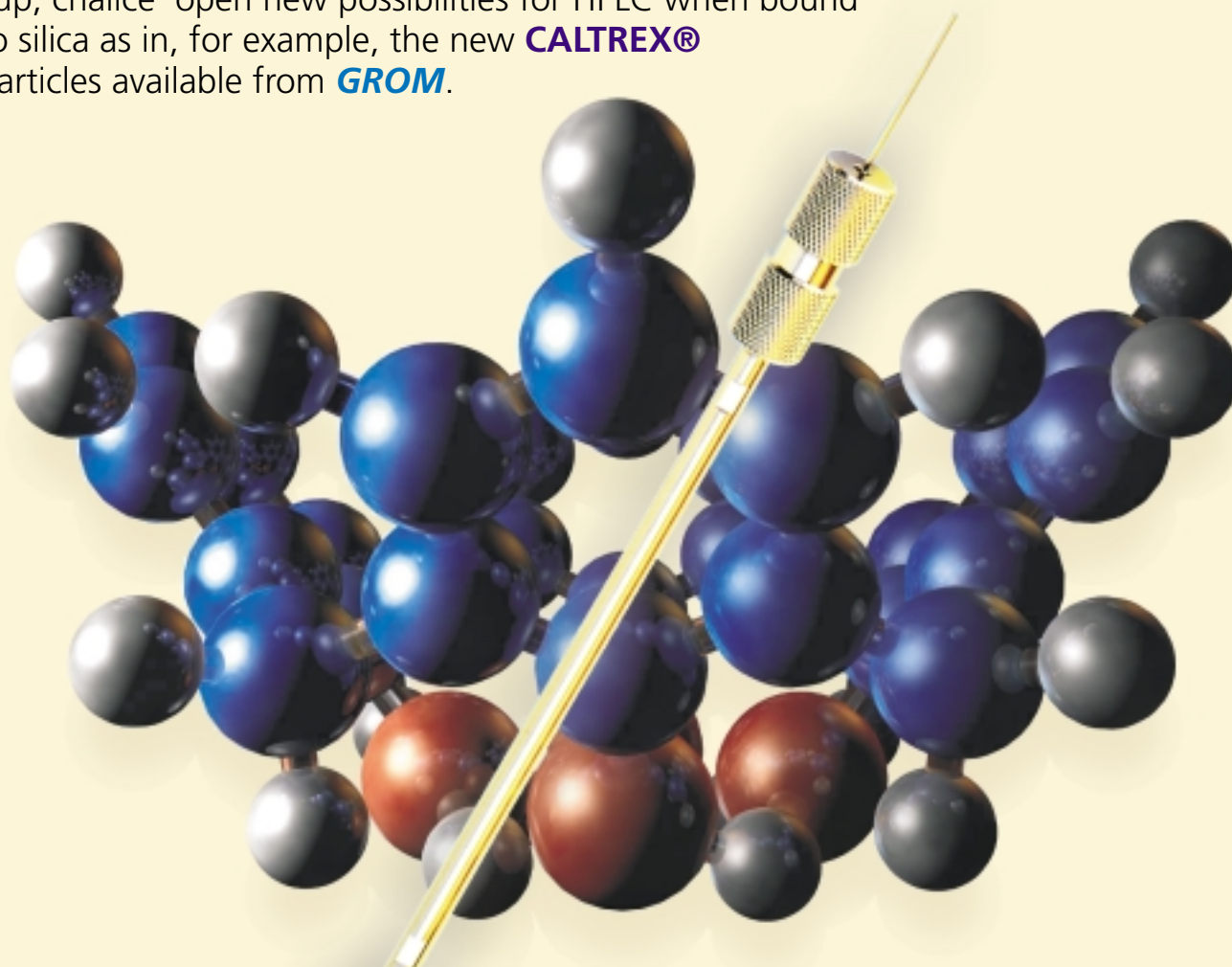


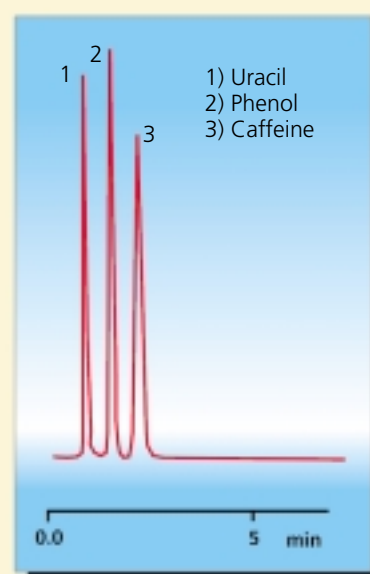
# Novel, unique Calixarene HPLC packings from SYNAPTEC

**Calixarenes** are cyclic condensation products of para-substituted phenols and formaldehyde. These cuplike molecules Calix (Greek kalyx) = cup, chalice open new possibilities for HPLC when bound to silica as in, for example, the new **CALTREX®** particles available from **GROM**.



**Column phase:** CALTRES HS, 5  $\mu$ m  
**Column size:** 125 x 4 mm  
**Eluent:** H<sub>2</sub>O / ACN = 95 / 5  
**Flow rate:** 1.0 mL / min  
**Temperature:** 25°C  
**Detection (UV):** 254 nm

**Column phase:** CALTRES HS, 5  $\mu$ m  
**Column size:** 125 x 3 mm  
**Eluent:** 2.5 mM K-Phosphate, pH 3.0 / ACN = 95 / 5  
**Flow rate:** 0.7 mL / min  
**Temperature:** 25°C  
**Detection (UV):** 220 nm



High speed columns packed with **CALTRES®** particles unite two desirable properties, namely rapid separations and the resolution of difficult separation problems, into a single product. Efficient and rapid separations are absolute requirements for many applications, for example, in screening for new compounds in the pharmaceutical industry.